



2022  
Diagnostic  
REPORT

 The Max  
Foundation





- **The Max Foundation's Diagnostic Program grew significantly by 38% in comparison to the previous year.**
- **More than 9,200 tests involving 37 hospitals in 36 countries were provided across all initiatives.**
- **Education & Awareness events reached 2,276 individuals globally.**

## Solidarity Fund

The Solidarity Fund supported the molecular diagnostic needs of CML patients treated at partner institutions in 19 countries in 2022, in collaboration with donors, physicians and labs in these institutions.

## Preferential Pricing

Through a collaboration with Cepheid, we have access to preferential pricing to procure test cartridge (kits) and GeneXpert® instruments at a 50–60% reduction relative to the market price.

## Education & Awareness

In partnership with local patient organizations, we aim to increase awareness of the importance of monitoring residual disease through initiatives like Treat Your Physician and capacity building activities.

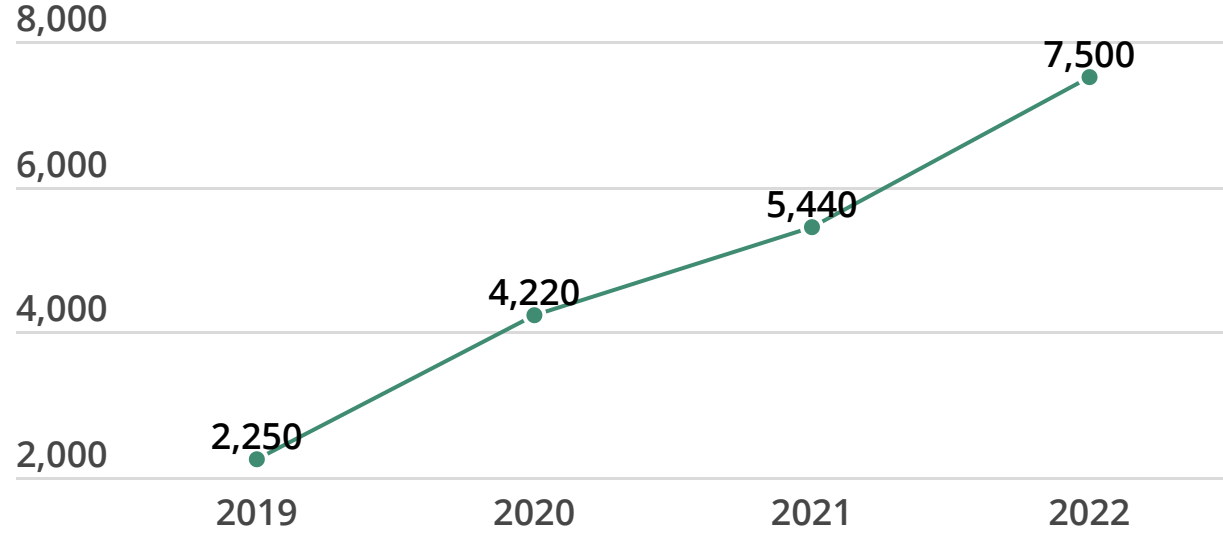
## Spot on CML

Through our partnership with the dedicated team at Fred Hutchinson Cancer Research Center, Spot On CML provides diagnostics in countries where there is no local means for testing through a novel technique using dry blood on paper.

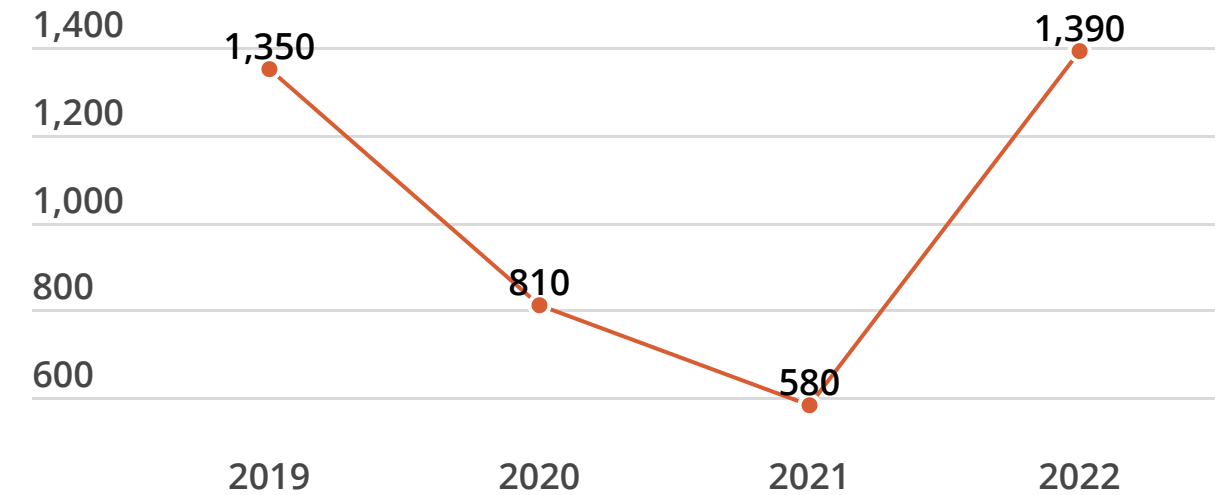
## Treatment-Free Remission Support Program

In collaboration with physicians and labs, this support program provides all monitoring needs for patients attempting TFR in selected countries.

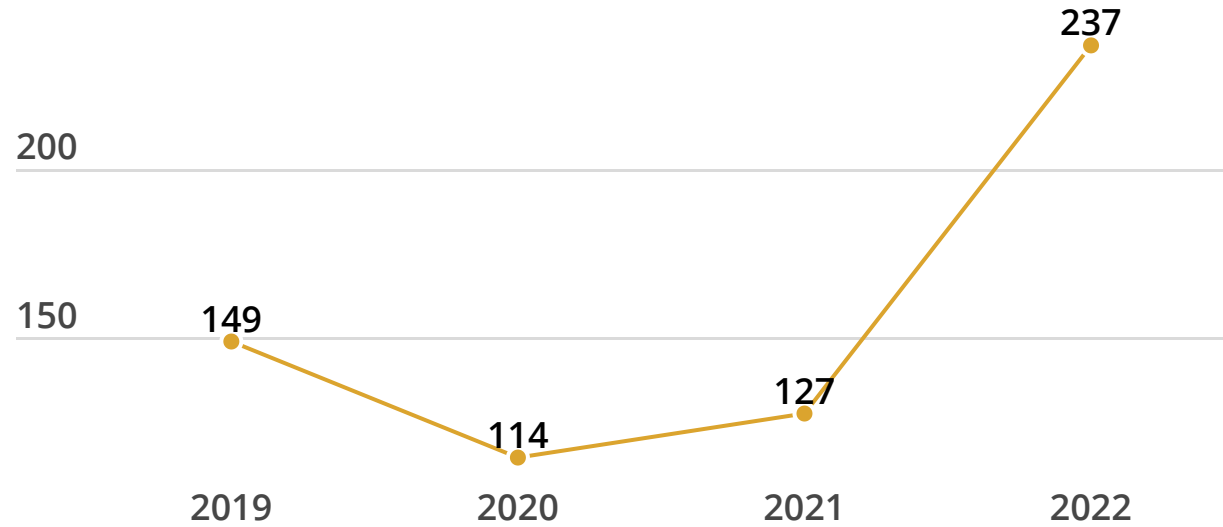
# Diagnostic Program Growth: 4-Year Trend



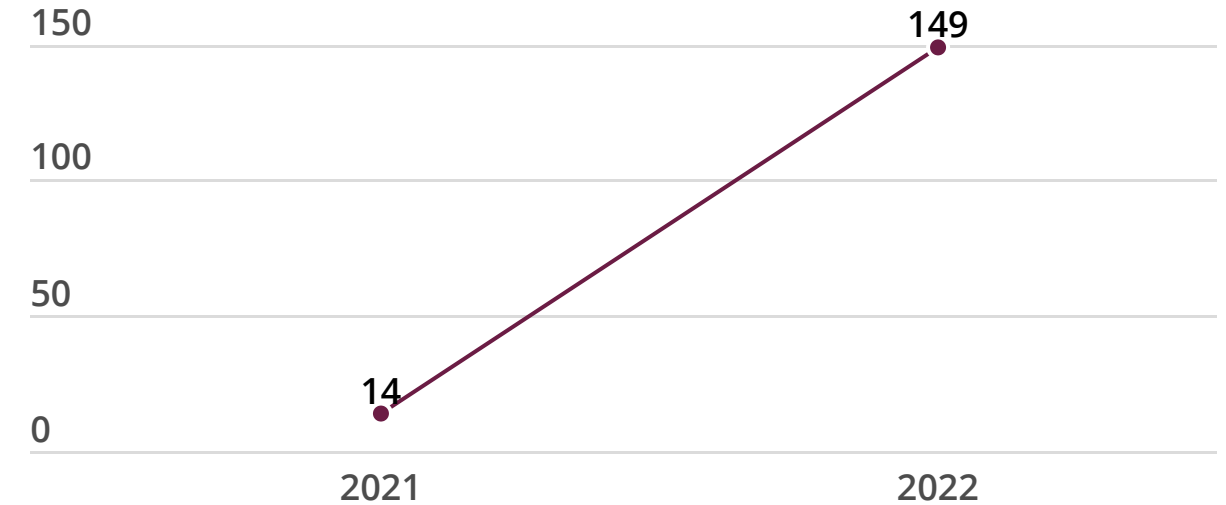
● Solidarity Fund



● 3rd. Party Purchase



● Spot On

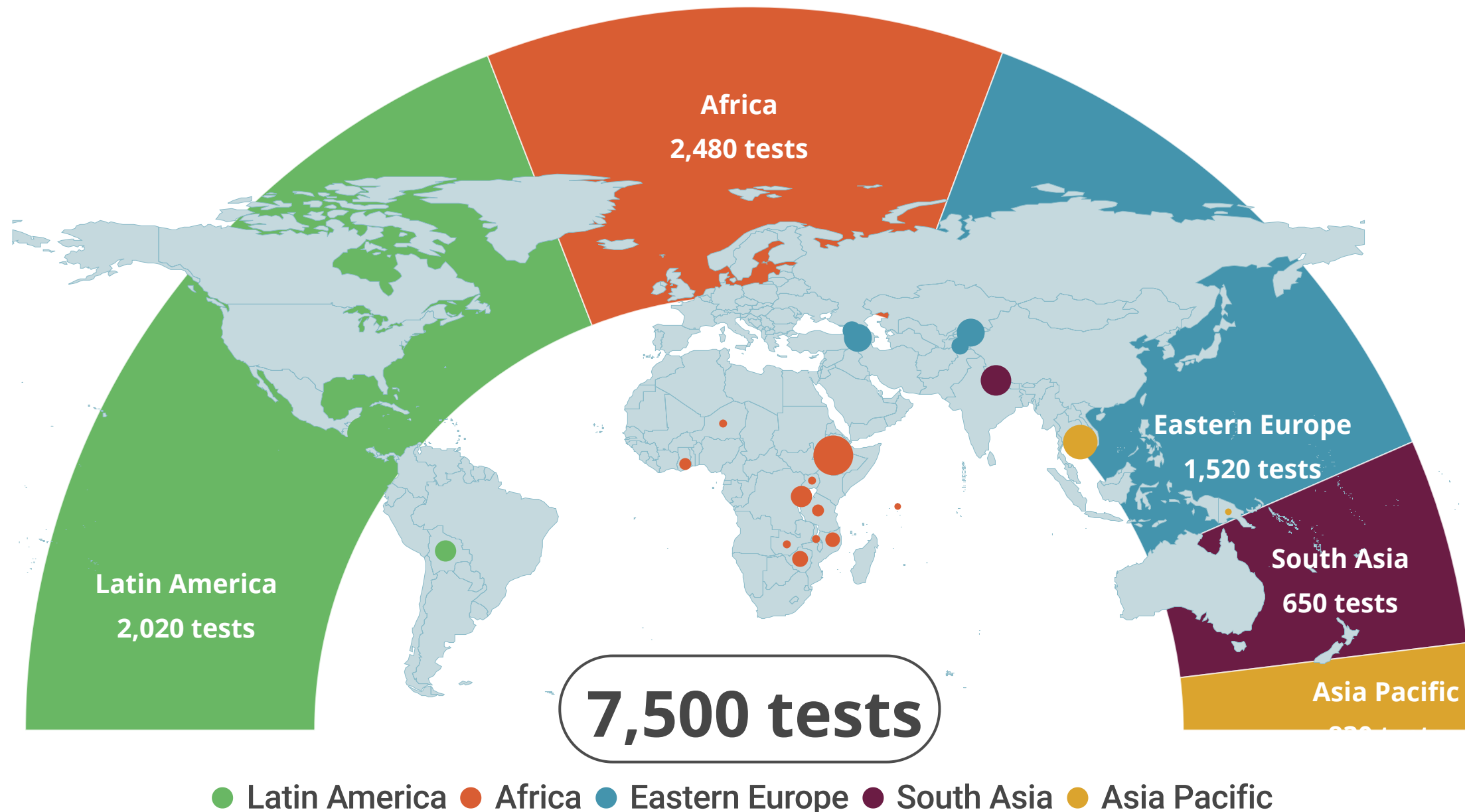


● TFR Program

Figures: Number of tests donated since 2019 to date



In 2022, we sponsored the purchase of tests and supplies through our Solidarity Fund, including 7,500 tests, 4 GeneXpert® instruments, 1 computer and 7 check-kits.



# Increasing Local Capacity



**A memorable day at Parirenyatwa Hospital in Zimbabwe. Arrived on March 8th, the donation of this GeneXpert® instrument means that patients no longer need to pay for blood samples to be sent to South Africa for testing.**





# 2022 Highlights



*Cepheid representatives visited the Lab at Mercy Medical Center in Cambodia for a training session with local technicians.*



*Lab technician during the process of conduction PCR in Georgia.*



*Receiving a shipments of free-of-charge test kits in Mozambique.*



*Lab technician conducting PCR in Patan Hospital, Nepal*



*Training session in Cambodia.*



*Lab specialist installing a cartridge into a GeneXpert instrument in Kyrgyzstan.*



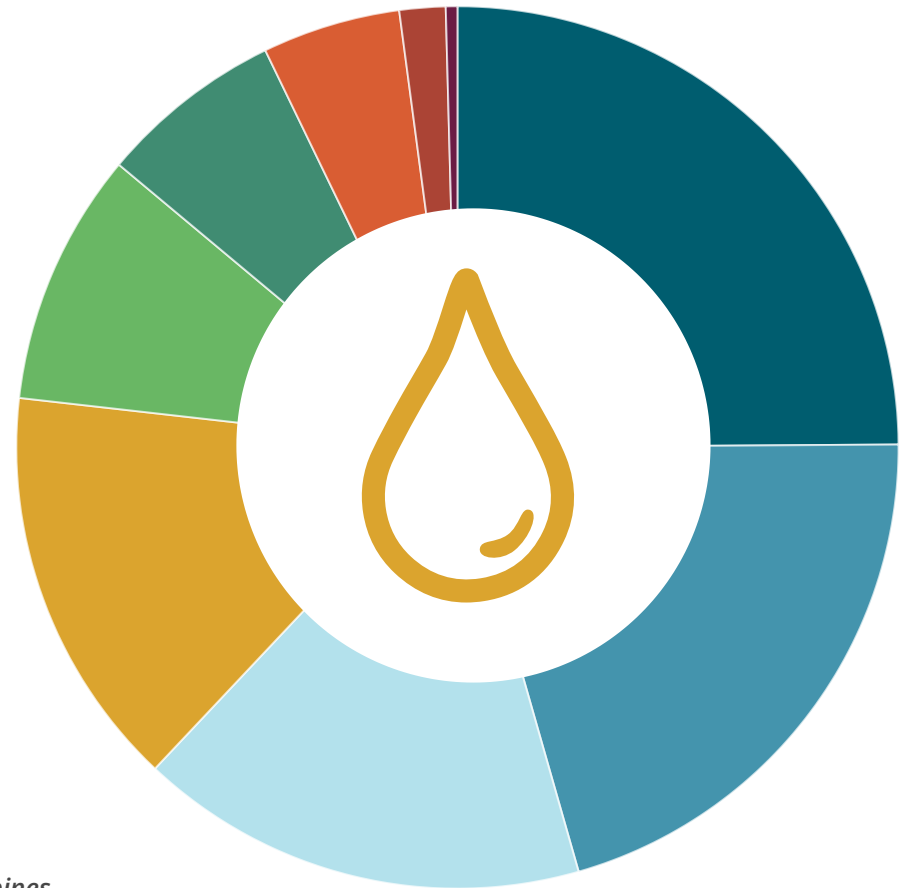
*Lyubov, a patient from Kyrgyzstan who received access to PCR testing, with her granddaughter.*



*Lab technician, physician Dr. Gyan and Max representative Sweta, at the lab in Patan Hospital, Nepal*



Spot On CML is a groundbreaking method developed by Dr. Jerry Radich and his team at Fred Hutchinson Cancer Center that utilizes a low-cost way to ship blood samples for diagnostics, mailing dried blood spots on a paper card. The team at Dr. Radich's lab are able to extract RNA from the dry blood and use advanced PCR methods to detect the BCR-ABL gene. The same process is utilized to detect BCR-ABL mutations. In 2022, the Spot On CML program tested **237 patients** from **9 countries**.



- Cote d'Ivoire (59)
- Venezuela (49)
- Nepal (39)
- Philippines (35)
- Benin (22)
- Fiji (16)
- Guinea-Conakry (12)
- Laos (4)
- Papua New Guinea (1)

*Spot On samples being extracted in Philippines, Papua New Guinea, Laos, Nepal and Fiji in 2022*

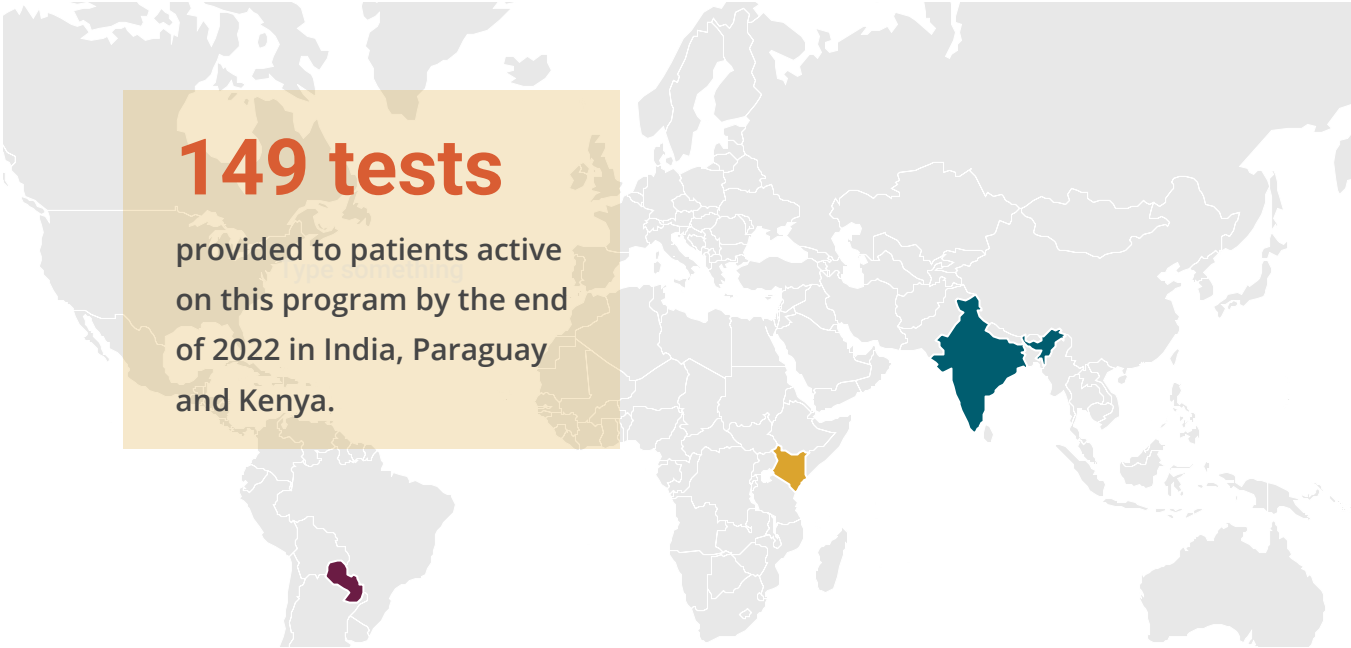
# Treatment-Free Remission Support Program

Launched in mid-2021, our Treatment-Free Remission (TFR) Support Program reached new patients in 2022. Our program has allowed for patients in the 3 open countries - Paraguay, India and Kenya - to safely attempt TFR. Our reach has expanded from 8 patients in 2021 to 20 patients in 2022. During the year, we supported the performance of 81 PCR tests in India, 48 in Paraguay and 20 in Kenya, and we have done this through agreements with local laboratories where patients attend to get tested. The first patients in two new countries, Georgia and Armenia, are expected to be approved in 2023.

## Patients Attempting TFR



- India (11)
- Paraguay (7)
- Kenya (2)





In 2022, our teams in South Asia and Asia Pacific, in partnership with local patient groups, have worked hard to organize 15 patient meetings in 4 countries, where nearly 1,500 individuals were able to hear and learn about topics such as why and how to monitor their disease, ask questions to expert physicians and find out when and how it is appropriate to attempt Treatment-Free Remission.

For World CML Day (9/22), we collaborated with 25 patient organizations in 23 countries, and hosted 26 events involving more than 800 participants.





With the launch of the Breast Cancer program in 2023, an initiative supporting diagnostics is also in the works to accompany availability of new medicines for Advanced Breast Cancer.



# Thank You to our Diagnostics Supporters



*Cepheid    Tanner Pharma  
Group*

*Fred Hutchinson Cancer  
Research Center*

*Bellevue Rotary  
Redmond Rotary  
Lake Union Rotary  
Shoreline Rotary  
Bellevue Breakfast Rotary  
Federal Way Rotary  
Auburn Rotary  
Issaquah Rotary  
Kent Rotary  
Mercer Island Rotary  
Rotary District 5030*

*And the generous contributions of members of the  
community at large*





Accelerating health equity,  
one patient at a time.

[themaxfoundation.org](http://themaxfoundation.org)

1107 NE 45th St, Suite 230  
Seattle WA 98105

**The Max Foundation's Mission**  
Accelerate health equity.